

SYMBOL LS2208

Quick Start Guide

<http://www.motorola.com/ls2208>

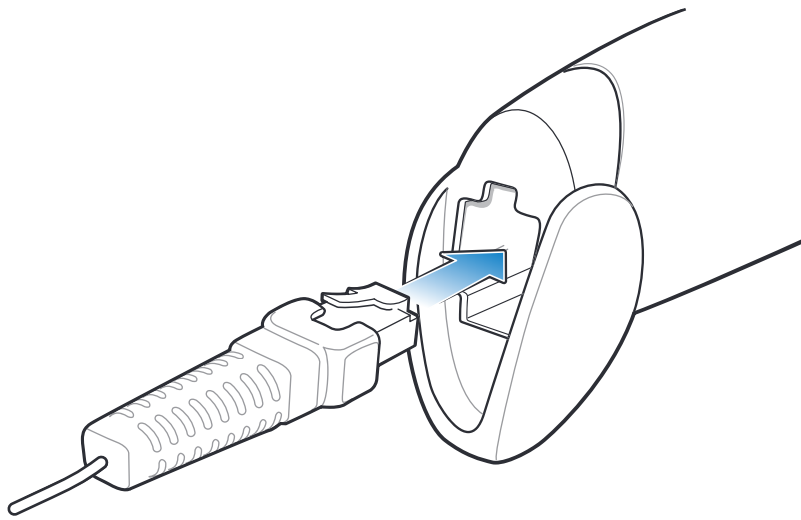
STEP 1 - ATTACH CABLE TO SCANNER

POST IN WORK AREA

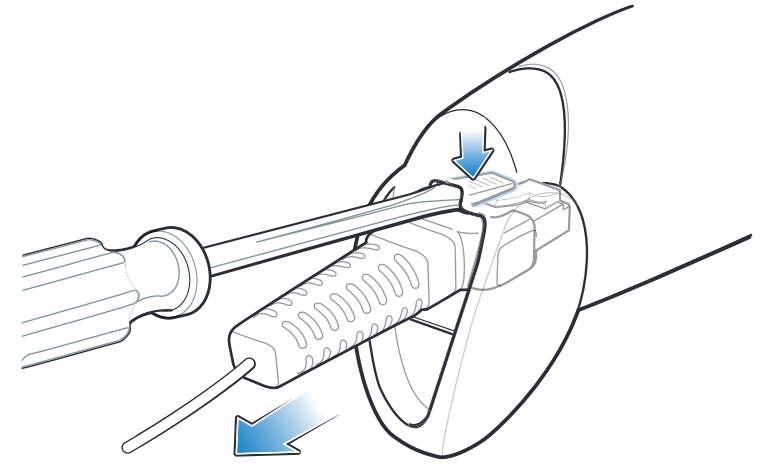


See Product Reference Guide for detailed information

Attach Cable



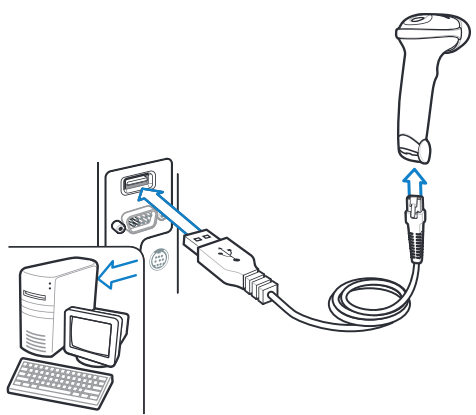
Remove Cable (to change interface)



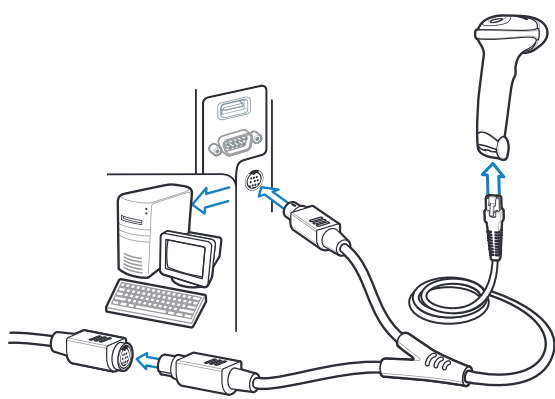
STEP 2 - CONNECT CABLE TO A HOST

NOTE: Cables may vary depending on configuration.

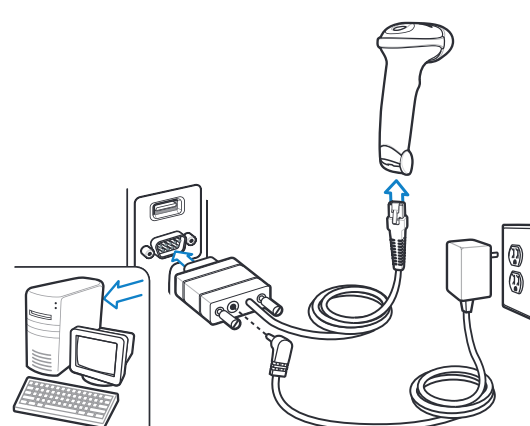
USB



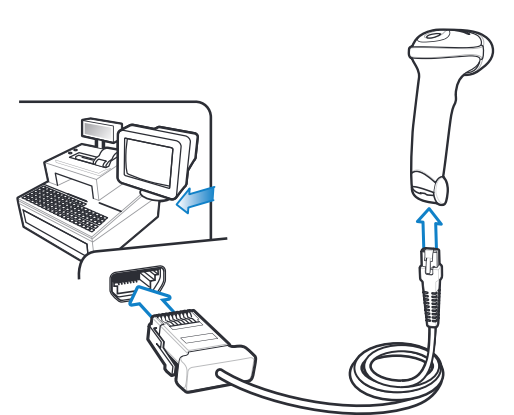
Keyboard Wedge



RS-232



IBM 46XX



STEP 3 - SET UP INTERFACE (Scan Host Bar Codes)

Important: Out of box, Keyboard Wedge and USB interfaces require no bar code scan setup. Bar codes are provided for complex programming or interface changes.

USB

Scan **ONE** of the bar codes below



IBM HAND-HELD USB



HID KEYBOARD EMULATION

Keyboard Wedge

Scan **ONE** of the bar codes below



IBM AT Notebook



IBM PC/AT and IBM PC COMPATIBLE

RS-232

Scan **ONE** of the bar codes below



OPOS/JPOS



STANDARD RS-232

IBM 46XX

Scan **ONE** of the bar codes below



PORT 5B



PORT 9B

ADD AN ENTER KEY (CARRIAGE RETURN/LINE FEED)

To add an **ENTER** key after scanned data, scan all **THREE** bar codes below in numerical order.

1



SCAN OPTIONS

2



<DATA>-<SUFFIX>

3



ENTER

ADD A TAB KEY

To add a **Tab** key after scanned data, scan all **THREE** Enter key bar codes above in numerical order then scan all **FIVE** bar codes below in numerical order.

1



SCAN SUFFIX

2



7

3



0

4



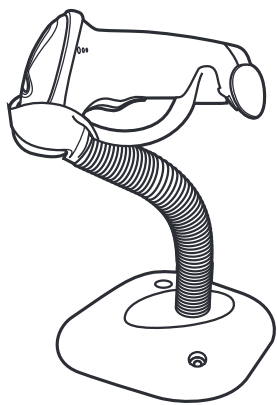
0

5



9

HANDS FREE STAND



SET DEFAULTS



SET DEFAULTS

OPTIMUM SCANNING



123SCAN²

123Scan² is an easy-to-use, PC-based software tool that enables rapid and easy customized setup via a bar code or USB cable. For more information, visit: <http://www.motorola.com/123Scan²>.

SCANNER INDICATIONS

LED Indications

Off Scanner is on and ready to scan, or no power to scanner	Green Bar code is successfully decoded	Red Transmission error
---	--	----------------------------------

Beeper Indications

Standard Use		
Low/medium/high beep Power up	Short medium beep Bar code decoded	4 long low beeps Transmission error detected, data is ignored
Parameter Menu Scanning		
High/low/high/low beep Successful parameter setting	High/low beep Correct programming sequence performed	Low/High beep Incorrect programming sequence or 'Cancel' bar code scanned

TROUBLESHOOTING

Troubleshooting

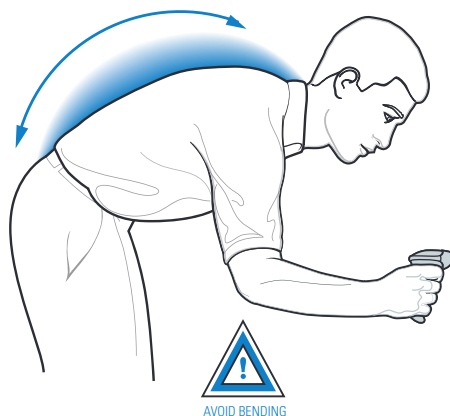
Scanner not working	Scanned data incorrectly displayed on host
No power to scanner Check system power; ensure power supply, if required, is connected	Scanner not programmed for correct host interface Scan appropriate host parameter bar codes
Incorrect interface cable used Ensure that correct interface cable is used	Scanner not programmed for bar code type Ensure scanner is programmed to read type of bar code being scanned
Interface/power cables are loose Ensure all cable connections are secure	Bar code unreadable Ensure bar code not defaced; try scanning test bar code of same bar code type
Scanner decoding bar code, but data not transmitting to host	Distance between scanner and bar code incorrect Move scanner closer to or further from bar code
Scanner not programmed for correct host interface Scan appropriate host parameter bar codes	Interface cable is loose Ensure all cable connections are secure

RECOMMENDED USAGE GUIDE - OPTIMUM BODY POSTURE

Avoid Extreme Wrist Angles



Avoid Bending



Avoid Reaching



Ergonomic Recommendations

Caution: In order to avoid or minimize the potential risk of ergonomic injury follow the recommendations below. Consult with your local Health & Safety Manager to ensure that you are adhering to your company's safety programs to prevent employee injury.

- Reduce or eliminate repetitive motion
- Maintain a natural position
- Reduce or eliminate excessive force
- Keep objects that are used frequently within easy reach
- Perform tasks at correct heights
- Reduce or eliminate vibration
- Reduce or eliminate direct pressure
- Provide adjustable workstations
- Provide adequate clearance
- Provide a suitable working environment
- Improve work procedures.

REGULATORY INFORMATION

© MOTOROLA, INC. 2010 All rights reserved.

Motorola reserves the right to make changes to any product to improve reliability, function, or design. Motorola does not assume any product liability arising out of, or in connection with, the application or use of any product, circuit, or application described herein. No license is granted, either expressly or by implication, estoppel, or otherwise under any patent right or patent, covering or relating to any combination, system, apparatus, machine, material, method, or process in which Motorola products might be used. An implied license exists only for equipment, circuits, and subsystems contained in Motorola products.

Power Supply

Note: Use only a Symbol-approved power supply (p/n 50-14000-253R, 50-14000-256R, 50-14000-257R, 50-14000-258R or 50-14000-259R) output rated 5 VDC and minimum 650mA. The power supply is certified to EN60950 with SELV outputs. Use of alternative power supply will invalidate any approval given to this device and may be dangerous. Hinweis: Benutzen Sie nur eine von Symbol Technologies genehmigte Stromversorgung mit einer Ausgangsleistung von 5 VDC (Gleichstrom) und mindestens 650mA. Die Stromversorgung ist nach EN60950 für die Verwendung in SELV-Stromkreisen zertifiziert. Bei Verwendung eines anderen Netzteils werden alle für das Gerät gewährten Genehmigungen außer Kraft gesetzt, und der Betrieb kann gefährlich sein.

Warranty

For the complete Motorola hardware product warranty statement, go to: <http://www.motorola.com/enterprisemobility/warranty>

Service Information

If you have a problem using the equipment, contact your facility's Technical or Systems Support. If there is a problem with the equipment, they will contact the Motorola Enterprise Mobility Support at: <http://www.motorola.com/enterprisemobility/contactsupport>

For the latest version of this guide go to: <http://www.motorola.com/enterprisemobility/manuals>

Waste Electrical and Electronic Equipment (WEEE)

English: For EU Customers: All products at the end of their life must be returned to Motorola for recycling. For information on how to return product, please go to: <http://www.motorola.com/recycling/wEEE>.

Spanish: En cumplimiento de la Directiva de la UE sobre residuos de aparatos eléctricos y electrónicos (RAEE), todos los productos de Motorola deben ser devueltos a Motorola para su reciclado. Para obtener más información sobre cómo devolver un producto, visite: <http://www.motorola.com/recycling/wEEE>.

Chinese: 此设备符合欧盟关于报废电子电气设备指令 (WEEE) 的要求。所有产品在使用寿命结束后必须返回摩托罗拉进行回收。有关如何退回产品的信息，请访问：<http://www.motorola.com/recycling/wEEE>。

French: Tous les produits de Motorola doivent être retournés à Motorola pour être recyclés. Pour de plus amples informations sur le retour de produits, consultez: <http://www.motorola.com/recycling/wEEE>.

German: Alle Produkte von Motorola müssen am Ende ihrer Lebensdauer zum Recycling an Motorola zurückgegeben werden. Informationen zur Rückabgabe von Produkten finden Sie unter: <http://www.motorola.com/recycling/wEEE>.

Italian: Tutti i prodotti di Motorola devono essere restituiti a Motorola per essere riciclati. Per informazioni sui modi di restituire i prodotti, visitate: <http://www.motorola.com/recycling/wEEE>.

Japanese: この製品は、EUの指令に基づいて、廃棄物の処理と再利用の観点から、使用終了後に必ずしも返却する必要があります。詳細については、<http://www.motorola.com/recycling/wEEE>をご覧ください。

Korean: 이 제품은 EU의 WEEE 지침에 따라, 사용이 끝난 후 반드시 회수되어야 합니다. 더 많은 정보를 얻으려면 <http://www.motorola.com/recycling/wEEE>를 방문하십시오.

Portuguese: Todos os produtos de Motorola devem ser devolvidos à Motorola para reciclagem. Para obter informações sobre como devolver o produto, visite: <http://www.motorola.com/recycling/wEEE>.

Russian: Все продукты Motorola должны быть возвращены в Motorola для переработки. Для получения информации о том, как вернуть продукт, посетите: <http://www.motorola.com/recycling/wEEE>.

Ukrainian: Всі продукти Motorola повинні бути повернуті до Motorola для переробки. Для отримання інформації про те, як повернути продукт, відвідайте: <http://www.motorola.com/recycling/wEEE>.

Polish: Wszystkie produkty Motorola muszą być oddane do Motorola w celu recyklingu. Aby uzyskać więcej informacji na temat oddania produktu, odwiedź: <http://www.motorola.com/recycling/wEEE>.

Czech: Všechny výrobky Motorola musí být vráceny do Motorola pro recyklaci. Pro více informací o vrácení výrobků navštivte: <http://www.motorola.com/recycling/wEEE>.

Dutch: Alle producten van Motorola moeten aan het einde van hun levensduur aan Motorola worden teruggegeven voor recycling. Ga naar: <http://www.motorola.com/recycling/wEEE> voor meer informatie over het teruggeven van producten.

Finnish: Kaikki Euroopan alueella myydyn Motorola-laitteiden käyttöikä päättyessä palautettava Motorola-yhtiölle, jotta laitteet voidaan kierrättää ja hyönteistään. Lisätietoja laitteiden palautuksesta löydät osoitteesta: <http://www.motorola.com/recycling/wEEE>.

Swedish: Alla produkter från Motorola ska återlämnas till Motorola för återvinning. För mer information om hur du återlämnar dina produkter, besök: <http://www.motorola.com/recycling/wEEE>.

Turkish: Tüm ürünler, kullanımdan sonra mutlaka Motorola'ya geri döndürülmelidir. Ürünleri geri döndürmek için lütfen <http://www.motorola.com/recycling/wEEE> adresine ziyaret edin.

Ukrainian: Всі продукти Motorola повинні бути повернуті до Motorola для переробки. Для отримання інформації про те, як повернути продукт, відвідайте: <http://www.motorola.com/recycling/wEEE>.

Polish: Wszystkie produkty Motorola muszą być oddane do Motorola w celu recyklingu. Aby uzyskać więcej informacji na temat oddania produktu, odwiedź: <http://www.motorola.com/recycling/wEEE>.

Czech: Všechny výrobky Motorola musí být vráceny do Motorola pro recyklaci. Pro více informací o vrácení výrobků navštivte: <http://www.motorola.com/recycling/wEEE>.

Dutch: Alle producten van Motorola moeten aan het einde van hun levensduur aan Motorola worden teruggegeven voor recycling. Ga naar: <http://www.motorola.com/recycling/wEEE> voor meer informatie over het teruggeven van producten.

Finnish: Kaikki Euroopan alueella myydyn Motorola-laitteiden käyttöikä päättyessä palautettava Motorola-yhtiölle, jotta laitteet voidaan kierrättää ja hyönteistään. Lisätietoja laitteiden palautuksesta löydät osoitteesta: <http://www.motorola.com/recycling/wEEE>.

Swedish: Alla produkter från Motorola ska återlämnas till Motorola för återvinning. För mer information om hur du återlämnar dina produkter, besök: <http://www.motorola.com/recycling/wEEE>.

Turkish: Tüm ürünler, kullanımdan sonra mutlaka Motorola'ya geri döndürülmelidir. Ürünleri geri döndürmek için lütfen <http://www.motorola.com/recycling/wEEE> adresine ziyaret edin.

Laser Labels

In accordance with Clause 5, IEC 825 and EN60825, the following information is provided to the user:

ENGLISH CLASS 1 CLASS 2	CLASS 1 LASER PRODUCT LASER LIGHT DO NOT STARE INTO BEAM CLASS 2 LASER PRODUCT	HEBREW רמת 1 מוצר לייזר רמת 1 רמת 2 אין להיטות אל חודר הזרם מוצר לייזר רמת 2
DANISH / DANSK KLASSE 1 KLASSE 2	KLASSE 1 LASERPRODUKT LASERLYF SE IKKE IND I STRÅLEN KLASSE 2 LASERPRODUKT	ITALIAN / ITALIANO CLASSE 1 CLASSE 2
DUTCH / NEDERLANDS KLASSE 1 KLASSE 2	KLASSE-1 LASERPRODUKT LASERLICHT NIET IN STRAAL STAREN KLASSE-2 LASERPRODUKT	NORWEGIAN / NORSK KLASSE 1 KLASSE 2
FINNISH / SUOMI LUOKKA 1 LUOKKA 2	LUOKKA 1 LASERTUOTE LASERVALO ÄLÄ TUJOTA SÄDETTÄ LUOKKA 2 LASERTUOTE	PORTUGUESE / PORTUGUÊS CLASSE 1 CLASSE 2
FRENCH / FRANÇAIS CLASSE 1 CLASSE 2	PRODUIT LASER DE CLASSE 1 LUMIERE LASER NE PAS REGARDER LE RAYON FXEMENT PRODUIT LASER DE CLASSE 2	SPANISH / ESPAÑOL CLASE 1 CLASE 2
GERMAN / DEUTSCH KLASSE 1 KLASSE 2	LASERPRODUKT DER KLASSE 1 LASERSTRAHLEN NICHT DIREKT IN DEN LASERSTRAHL SCHAUEN LASERPRODUKT DER KLASSE 2	SWEDISH / SVENSKA KLASS 1 KLASS 2
JAPANESE / 日本語 第1種 第2種	第1種レーザー製品 レーザー光線 光線を見つめないでください 第2種レーザー製品	CHINESE / 简体中文 1 类 2 类
		KOREAN / 한국어 1등급 2등급

Regulatory Information

Symbol Technologies, Inc., the Enterprise Mobility business of Motorola, Inc. ("Motorola"). All Symbol devices are designed to be compliant with rules and regulations in locations they are sold and will be labeled as required. Any changes or modifications to Symbol Technologies equipment, not expressly approved by Symbol Technologies, could void the user's authority to operate the equipment. Antenna's, use only the supplied or an approved replacement antenna. Unapproved antennas, modifications, or attachments could cause damage and may violate regulations.

Laser Devices

Symbol products using lasers complies with 21CFR1040.10 and 1040.11 except for deviations pursuant to laser notice No. 50, dated June 24, 2007 and IEC 60825-1 (Ed. 2.0), EN60825-1:2007. The laser classification is marked on one of the labels on the product. Class 1 Laser devices are not considered to be hazardous when used for their intended purpose.

The following statement is required to comply with US and international regulations: **Caution: Use of controls, adjustments or performance of procedures other than those specified herein may result in hazardous laser light exposure.** Class 2 laser scanners use a low power, visible light diode. As with any very bright light source, such as the sun, the user should avoid staring directly into the light beam. Momentary exposure to a Class 2 laser is not known to be harmful.

Radio Frequency Interference Requirements

FC Tested to comply with FCC Standards FOR HOME OR OFFICE USE. Note: This equipment has been tested and found to comply with the limits for a Class B digital device, pursuant to Part 15 of the FCC rules. These limits are designed to provide reasonable protection against harmful interference in residential installation. This equipment generates, uses and can radiate radio frequency energy and, if not installed and used in accordance with the instruction manual, may cause harmful interference to radio communications. However there is no guarantee that interference will not occur in a particular installation. If this equipment does cause harmful interference to radio or television reception, which can be determined by turning the equipment off and on, the user is encouraged to try to correct the interference by one or more of the following measures:

- Reorient or relocate the receiving antenna
- Increase the separation between the equipment and receiver
- Connect the equipment into an outlet on a circuit different from that to which the receiver is connected
- Consult the dealer or an experienced radio/TV technician for help.

Radio Frequency Interference Requirements - Canada

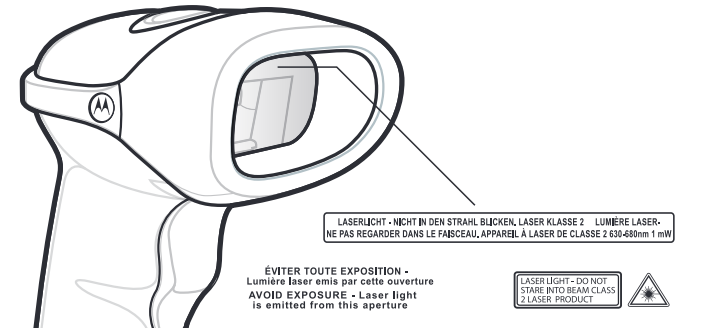
This Class B digital apparatus complies with Canadian ICES-003. Cet appareil numérique de la classe B est conforme à la norme NMB-003 du Canada.

Marking and European Economic Area (EEA)

CE Statement of Compliance Symbol Technologies, Inc., hereby declares that this device is in compliance with all the applicable Directives, 89/336/EEC, 73/23/EEC. A Declaration of Conformity may be obtained from <http://www.motorola.com/enterprisemobility/doc>

Japan (VCCI) - Voluntary Control Council for Interference この装置は、情報処理装置等電波障害自主規制協議会 (VCCI) の基準に基づくクラス B 情報技術装置です。この装置は、家庭環境で使用することを目的としていますが、この装置がラジオやテレビジョン受信機に近接して使用されると、受信障害を引き起こすことがあります。取扱説明書に従って正しい取り扱いをして下さい。 This is a Class B product based on the standard of the Voluntary Control Council for Interference from Information Technology Equipment (VCCI). If this is used near a radio or television receiver in a domestic environment, it may cause radio interference. Install and use the equipment according to the instruction manual.

POST IN WORK AREA



SYMBOLS2208

<http://www.motorola.com/ls2208>